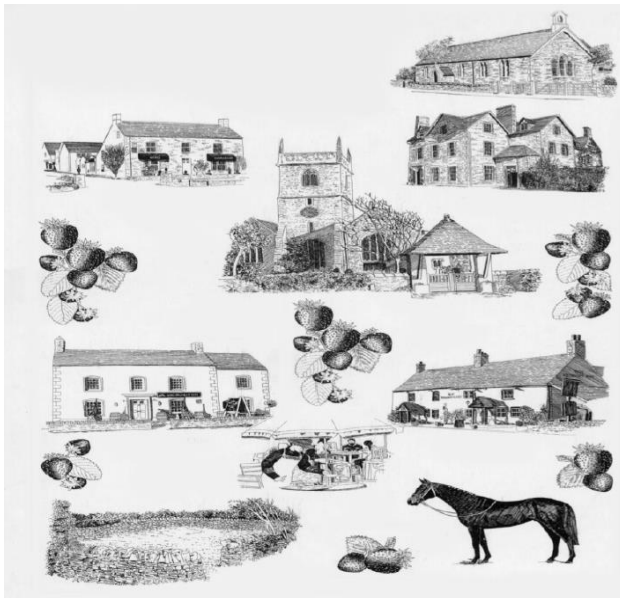


What's on in Crudwell

Issue **100** March 2025



My CRUDWELL
A COMMUNITY PUBLICATION



Contents

News from the archives	page 3
New village businesses	page 4
Village Hall	page 6
Parish Council	page 7
All Saints Church	page 8
Crudwell needs you	page 9
Social Clubs	page 10
Sports Clubs	page 11
Tetbury Goods Shed	page 15
Village Calendar	page 16

Editor's Welcome

Even though I'm a newcomer to the role of newsletter editor, it's a pleasure to welcome you to issue 100 of What's On In Crudwell. As I was looking back through a small mountain of past editions (see the article on page 3), I was struck by how many different people have been involved with the various incarnations of our village newsletter over the years. A massive thank you to all editors, contributors and distributors past and present!

Our advertisers are vital to the continued existence of WOIC as a paper publication and big thanks are also due to them for their continued support. We have five new local businesses advertising with us this month which is very exciting.

I hope you'll find the new Village Calendar on the back page a useful summary of everything that is happening month by month. Do let me know if you would like anything added or amended for next month.

Keep me up to date with everything Crudwell related at woicrudwell@gmail.com

Katie Hawkins, Editor

Local Services

Post Office Monday and Tuesday 2.00pm - 5.30pm, Wednesday 9.00am-12.30pm

Collection time 4.45 pm Contact 01666 577201. **PLEASE NOTE - THE POST OFFICE**

WILL BE CLOSED 3 – 14 MARCH

Mobile Library 11.10-11.45 am The Dawneys, Crudwell Friday 28 March

Defibrillators Village Hall (Code C123X) and Wheatsheaf Inn (C159X) BT telephone box, Eastcourt

— The —
WHEATSHEAF INN
CRUDWELL

We are celebrating national pie week every Friday and Saturday in
March 2025

A selection of homemade pies catering for all tastes served with
rich gravy, a choice of chunky chips or mash (if you ask
nicely....both!) and seasonal vegetables

All pies are made with shortcrust pastry

- Beef and stilton
- Pork and apricot
- Lamb, mushroom and rosemary
 - Chicken and chorizo
- Butternut squash and celeriac

Each week there will be a choice of pies
and these will be subject to availability



Booking is advisable

Tel: 01666 577739

From the Crudwell newsletter archives

I asked last month if anyone had any old copies of village newsletters that I could look through. As always, Crudwell delivered!



Many thanks to Helen Carter for unearthing a copy of the Crudwell Courier from May 1995 which celebrated the 50th anniversary of VE Day with a special supplement featuring the wartime reminiscences of villagers who were resident in Crudwell during 1939-45. Their tales of city evacuees, the local home guard, dashing young airmen based at Kemble and the Women's Land Army were a fascinating insight into a time that has almost disappeared from living memory. We will reprint some of these memories in WOIC in May when the country marks the 80th anniversary of VE Day.

A further treasure trove was the hundreds of pristine copies of WOIC and its predecessors that Dave and Lesley Bailey have been collecting since the very first village newsletter was published in 1986. Whilst I can't pretend to have read every single edition of The Crudwell Courier, the Parish News and What's On In Crudwell, I can report that many aspects of community life have remained constant over the last forty years. The school, playgroup (now preschool), scouts, All Saints church and Coffee n Chat have been regular contributors since the first newsletter. Whilst some groups such as the Crudwell Majorettes, Crudwell Cooks, the Handbell Ringers, the WI and the Brownies and Guides may have disappeared, new ones have come along.

Many pages have been devoted over the years to the Crudwell summer regulars of the Strawberry Fayre, and the 24-Hour Bike Ride. The village is looking forward to clocking up yet more miles in the bike saddle this year, but the Strawberry Fayre is taking a break awaiting a new team to take over the tea urn and strawberry huller. Do let WOIC know if you are reading this and thinking you could contribute to a revival in some way.

It was also interesting to see how the format of newsletters has changed over the years. From the 1980s typewritten copies of The Courier printed on coloured paper with hand drawn illustrations, through the glossy full colour editions of Crudwell Parish News and now to our "handy-sized" black and white WOICs. Online publishing has also been embraced since the Covid lockdowns of 2020 when WOIC first went digital and kept villagers up to date with the latest Zoom chats and quizzes and local pub takeaway offerings.

I'm very pleased to be helping carry on the Crudwell newsletter tradition for a while. And as every editor over the last forty years must have said, keep your ideas and contributions coming..... we'd just have blank pages without you!

Katie Hawkins WOIC editor



Dear Crudwell Village,

As many of you may know, we are planning to open a farm shop in the village in the near future. We are hoping to be up and running in April 2025.

Murcott Farm Shop will be located in the village end of Crudwell Garage. As you will see we have spent some time upgrading the building to make it more suitable to sell food.

Our plan is to create an outlet that sells high quality, as local as possibly sourced, food and drink and other useful and interesting stuff. We will sell take away coffee, bread, pastries, milk, cheese, vegetables, meat and lots of lovely other stuff that you will hopefully want to buy.

We will aim to source our produce as locally as possible and will always be interested in hearing from people who might be interested in selling their produce through the shop.

It is not a coffee shop, but there will be limited space to sit and drink your coffee, or to meet up with people and in the summer we hope people might be able to sit around the back and enjoy the sunshine.

We are working on what the best way to access the shop from the village might be - but please bear with us initially as this will take time to work out how busy we are and what might be the best way to approach the shop. Initially, there will be parking for up to 10 cars but be careful coming in and out.

We have now completed our final food selling approval procedures and we have also applied for a license to sell alcohol. This is a formal notice that we do plan to sell alcohol - should you have any issue or concerns over this, please do see link below - to see our application in detail.

<https://www.wiltshire.gov.uk/licences-permits-new-premises-applications>
or email publicprotectionnorth@wiltshire.gov.uk

We really hope this can be a great addition to the village - we will do our very best to balance quality with cost, but we are not competing with Aldi or Waitrose - we hope to deliver the village with a new resource that is both interesting and different.

We look forward to welcoming you soon and should you have any specific ideas or requests - please do reach out on hello@murcottfarmshop.co.uk.

See you soon!

The Murcott Farm Shop Team



I'm sure you'll have noticed that the forecourt of what used to be Crudwell Garage is now home to a fleet of shiny white vans. My name is John Geddes, and I'd like to take the opportunity to introduce my business, Cotswold Vans, to the village.

I set up Cotswolds Vans in 2021 after 14 years working for local Aston Martin dealerships. Nine people work with me running the business, including three from Crudwell. We started at the former scrapyard site just outside Crudwell, but as the business grew, we needed more space to store and service our growing stock of vehicles. We expanded our vehicle preparation operation into a new facility at Hayleaze Farm and when the chance came to take on part of the premises of Crudwell Garage, it was too good an opportunity to miss. This is now our "shop front" and business HQ.

So, what is Cotswold Vans all about? The short answer is that we buy and sell pre-owned vans. We usually have around 45 – 60 vehicles in stock and we offer everything from small car derived vans, right up to extra-long wheelbase and chassis cab vans. Prices range from £2,000 to £25,000.

But we are not just about vans – we also sell some 4x4s and camper vans. If you would like one of our vans converted into a camper van, we can also arrange that for you. We also offer a vehicle sourcing service if we don't currently have a vehicle in stock to suit your needs.

We take great pride in the quality of our vehicle preparation so our customers can relax and enjoy their new vehicle from the moment they drive it away.

We are looking forward to becoming a familiar part of the village, particularly as we will be sharing the former Crudwell Garage site with Murcott Farm Shop when they open in April. What other village offers you the chance to buy a Ford Transit along with your pint of milk and bag of potatoes?

If we can help you in any way, contact us on 01285 600202 or visit our website www.cotswoldvans.co.uk

John Geddes, Owner Cotswold Vans

Crudwell Village Hall

Hot on the heels of the wonderful news that a farm shop is making its way to Crudwell, we're pleased to say that some essentials will also be available through a new vending machine to be installed outside the village hall this month. Stock will be determined through demand, but it will feature a combination of snacks, drinks, and essential toiletries to save the late night/early morning car dash to the garage or Malmesbury. Once it's in, we'll let you know the precise range and hope this new facility proves useful for the community and village hall and recreation ground users.

Some less good news on our hunt for funding for our pump track – our applications to both Children in Need and Sport England have been turned down. But we are in no way giving up hope and are examining other funding pots available for this kind of work. Also still missing are the crossbar pieces for our new football goals. The suppliers are being chased and we really hope to have them with us soon to finish the installation of our new pitch for all to use.

Our next AGM is this month. Please come along to the village hall on Tuesday, 25 h March from 7pmt to hear a review of the year and plans for 2025, make your voice heard, and secure re-election for our wonderful group of volunteers. Refreshments will be on hand.

Work still to plan for and discuss is the sourcing of picnic tables and benches and our next phase of planting – we've been hearing some very interesting things about 'micro-forests', densely packed tree planting that does wonders for growth and biodiversity.

Also getting ever-closer is the next Crudwell 24-hr bike ride – the committee is reconvening after its winter break and we know the plans for this year are even bigger and better.

As ever, our hunt for new committee members to help us think through and do all these things well always continues so, if keen, please let me know.

Phil Buxton, chair, Crudwell Village Hall Committee.

chair@crudwellvillagehall.org

Crudwell Village Hall is a great venue for a variety of functions including children's parties, wedding receptions, meetings presentations, as well as activities and clubs.

There is a large fully equipped kitchen, refitted and refurbished facilities, a large hall with a capacity of 150 to 200 people, meeting room, large playing field and a children's playground adjacent to an outdoor fitness area. The hall has free Wi-Fi and drop-down projector screens.

For availability, bookings and more general information, head to our website or email bookings@cvhrg.org.uk



Parish Council and Neighbourhood Plan

Parish Council

The Parish Council last met on Tuesday the 11th February 2025. Meeting minutes are published on our website at: <http://www.crudwell-pc.gov.uk/category/agenda/> together with the agenda for the next meeting which will take place at 7:00 PM on Tuesday the 18th of March 2025 in the Village Hall. Public speaking is permitted during the first ten minutes of the meeting, and you are, if you wish able to attend.

Flood Action Group (FLAG)

Councillors have held meetings with representatives of Crudwell FLAG and agreed an action plan to help prepare the village for future flooding events. The plan includes:

- Communicating with local landowners reminding them of riparian responsibilities to ensure that watercourses on their land are well maintained.
- Liaison with Wiltshire Council to ensure that culverts and ditches within their jurisdiction are well maintained.
- Ensuring that sufficient road signs and gel sacks are available and accessible for quick use.
- Reviewing the Parish's Emergency Plan to ensure that all possible scenarios are covered.
- Ensuring that the Council carries out its riparian responsibilities in respect of watercourses on land which is owned by the Parish.
- A Parish Councillor to liaise as a member of Crudwell FLAG with a monthly report back to Council meetings. You can find information in the Facebook group, or via: crudwellflag@gmail.com

Information for landowners re Riparian responsibilities can be found on our website at: <https://www.my-crudwell.org/2025/01/information-for-landowners-re-riparian-rights/>

Local Elections

On Thursday 1 May 2025, elections will take place for 98 Unitary Wiltshire Councillors and across the Parish and Town Councils in Wiltshire including Crudwell. Polling will take place in Crudwell Village Hall from 7am to 10pm. Further **information is availability on** <https://www.wiltshire.gov.uk/local-elections>

Roy F Hamilton-Lambley; Chairman, Crudwell Parish Council

2031 Neighbourhood Plan Allocation; Tuners Lane

An exhibition of the final designs for the Tuners Lane site will be held during March by the site agents. The final details of date, venue and time will be confirmed on our website, Facebook Page and via our my-Crudwell mailing list as soon as possible. Meanwhile, the Planning Application remains called in for North Wiltshire Planning Committee review.

2038 Neighbourhood Plan Review, important information.

- Important information regarding the impact of the new Government housing targets which require the number of 39 additional homes required in Crudwell by 2038 is given in a leaflet delivered with this journal. This bulletin includes how the Neighbourhood Plan can help ensure that the new requirements are met by 2038 and we can therefore avoid large unwanted developments similar to those seen locally and elsewhere.
- We strongly recommend that you review this document and you can, if you wish, make your comments on the bulletin's proposals via our website at <https://www.my-crudwell.org>. Paper copies of the bulletin with your written response can alternatively be left at the Post Office, The Wheatsheaf or The Potting Shed by 31st March 2025.

This update is an informal means of keeping you updated so that there are no surprises further down the line. The next formal consultation called Regulation 14, on all of the draft policies in the Plan, called Regulation 14, will take place later this year.

Cllr. Roy F Hamilton-Lambley, Chairman; Crudwell Neighbourhood Plan Steering Group

Greetings from All Saints Church

“Wait for the Lord; be strong and take heart and wait for the Lord.” Psalm 27:14

Dear Friends,

Lent and Spring overlap each year. After the long wet months of winter, we're ready to see some colour in our gardens and countryside too. In fact, Dee and I play an observation game on our walks called 'SOS,' or 'Signs of Spring.' Perhaps you do the same thing, looking for a shoot here, or a bird song there? But with Lent and Spring, we are forced to wait. We can't hurry them along, much as we would like.

Often, we either try to give something up during Lent or try to do something positive for those around us, like '40 Acts of Kindness.' In our minds we might be saying that perhaps, if we do these things, our character will change immediately for the better. Right?

Yet it doesn't always seem to work out like that, or at least, not as fast as we hope for. But in these things, we are forced to wait. We can't hurry the changes along, much as we would like. I only discovered this fact recently. I never knew that many shop bought tomatoes are picked completely green and unripe, so they aren't damaged in transport between farm and warehouse. Instead, they get sprayed with a gas (Ethylene) to artificially ripen them just before they get put out on the display stand.

And it works! We buy them all the year round. They look wonderful on the outside, but the 'forced' ripening process leaves the inside still hard and virtually tasteless! This isn't a plug specifically for growing your own tomatoes or only buying from local farm shops, although I would encourage both, but it is a reminder that we shouldn't worry about how fast we seem to be growing spiritually. God is much more concerned with healthy growth, which usually takes time.

Progress might seem imperceptible and painfully slow to us, but may the Lord help us all today as we all seek to grow more like Jesus.

With every blessing,
Reverend Bob Molton

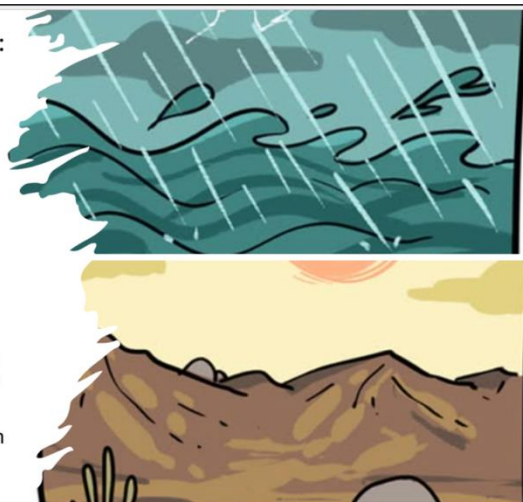
Please visit www.braydonbrook.co.uk and Braydon Brook Churches Facebook Page for full details of services and other events.

Pub Theology invites you to :
Fire and Ice ?
Climate Change and the
Christian Conscience,
a discussion led by
Doug Johnson.

Doug is a partner in the Sustainability practice at one of the Big 4 global professional services firms. He works with many of the world's largest companies to help them build more sustainable business practices whilst achieving their business goals. Doug is the sponsoring partner of the Christian network within his firm,

7:30 @ the Horse and Groom on
Friday 28th Feb.

Art: Rohan Chakravarty.



MEN'S WEEKLY STUDY

- WHEN? - WEDNESDAYS @ 7.30PM
- WHERE? - 1 DAY'S CT, CRUDWELL
- WHAT? - GEM STONES IN GENESIS

* More info from Rev'd Bob –
rector.braydonbrook@gmail.com

Crudwell needs **YOU!**



Are there any volunteers out there willing to **clean our church brass** on a monthly rota basis?

Cloths and polish supplied!!

It would be lovely to hear from you.

Please contact Helen Dawson on 0742658102 or Margaret English on 577572.

Crudwell Pre-School

Hello everyone,

As a charity Pre-School has very limited funds and we rely on the kind nature of people to help us with certain things.

Our garden is our pride and joy and now it needs some care and attention. This is where we need help. **Does anyone have any free time to help with the gardening at all please?**

It would involve weeding our raised flower beds and giving the foliage around the garden a trim.

We also have a very large (silver birch I think, but I may be incorrect) which needs pruning. Does anyone have recommendations of someone who could do this for us please?

If you can help in any way, please contact me (Cathy) on 07986622191 or info@crudwellpreschool.co.uk.

Thank you so much in advance, Cathy and team.



Centre Point is the UK's leading youth homelessness charity- but what does that actually mean? If means that, alongside their partners, they support almost 14,000 young people every year and are campaigning to end youth homelessness by 2037

Braydon Brook Parish churches , together with Crudwell Primary School, are fundraising for Centre Point over the Lent period , with a major focus on the Sleepout.

Please sign up to the Sleepout by emailing the Parish Office at bbandgb@gmail.com or hit the JustGiving page if you want to give <https://www.justgiving.com/fundraising/nicolag@martin#sharePage>



Saturday 21st/Sunday 22nd June 2025

After a highly successful event last year, we are looking to make the 2025 Crudwell Bike Ride better and bigger.

We are always pleased to welcome **volunteers new and old**, to help with the running of the event, and teams of enthusiastic riders - regardless of age, fitness and speed levels! We pride ourselves on being a true community event - please come and join us.

If you are interested in finding out more about the event, please email us via our website crudwellbikeride.co.uk and we will let you know the date of our next meeting.

Crudwell Ladies

We had such an interesting talk at our February meeting when David Head told us about four of the most interesting events on earth. One is the recently discovered coloured mountains in Peru, which they think are caused by global warming as the snow has melted away. The other item in Peru are the Nazca Lines. Luckily Peru is very protective of its country and historic places. Hopefully David will be back again.

On Wednesday, 12th March we welcome Sheila Lloyd-Graham (also known as Lady She of Sheunique) to talk to us about her time living within the Berlin Wall. On Wednesday 9th April, Pam Baldry will be talking about Glass With A Story.

Our membership is not restricted to ladies living in Crudwell and members are very welcome to bring along a guest, for which we make a small charge of £3.

Please see the Village Calendar on the back page for future events and contact details. .

North Wilts Flower Club

Our February meeting with Emily from Persephone Violet in Malmesbury was most enjoyable. She did some beautiful and artistic arrangements for us, as well as talking us through the mechanics of her work.

On March 19th we welcome Michael Bowyer MBE, President of NAFAS SW, to make some Easter floral arrangements for us. We start at 7.30 but arrive around 7pm. There is plenty of parking space and we have free tea/coffee and cake at the end. Do join us. *Cathy Carroll*

Coffee n Chat

The February meeting of friends and neighbours was well attended (including the Community Police Officer) and was a particularly sociable occasion. New faces are very welcome. Funds raised at our coffee mornings go towards the building and churchyard maintenance. The churchyard snowdrops are especially good this year and significant gardening work is also being undertaken.

Please see the Village Calendar on the back page for future events and contact details



Crudwell Honey

Prize winning local honey produced by bees foraging in and around Crudwell and Malmesbury. £6 for 340g (12oz) jar.

Please contact Tim Bullock: 07530 627062

tim.bullock1797@gmail.com.



Crudwell Honey

Short Mat Bowls

The winter season is almost over but we still have a series of important games to play later this month and into March.

In the Malmesbury League, Kingfishers have finished second with Kestrels third. Both teams lost in the first round of the ML KO Cup - which was very disappointing!! We are currently top of the County League (North) but Melksham 'are snapping at our heels'. We have won our last three games 9-0 (Devizes away), 7-2 (Calne at home) and last night, a hard fought 5-4 away victory over Marshfield. Next week we have a crunch match against Melksham (away) and we finish with yet another away match at Calne. Fingers crossed - hopefully we can get enough points to win our league again. We finish off our winter season with a somewhat delayed home and away game against Market Lavington for the Summer League County Championship.

The club had three entries in the latest county competition, the over 55 Pairs. Les and Pam lost narrowly in the championship semi-final as did Anita and Brian R in the Shield semi-final. However, after winning 6 games out of 7, Julia and Geoff won the Shield for the second time.

If you fancy having a go, just come along to a club session on Tuesday evenings or Thursday afternoons.

See the Village Calendar on the back page for more details.

Geoff

Tai Chi

Our weekly Tuesday Tai Chi classes continue to be very popular, and all are welcome to attend. Faith is a great teacher and really helps to keep our sessions flowing. Tai Chi is recommended as a proven way of improving our concentration, balance and co-ordination. The exercises can be done standing or sitting and are done to a background of very gentle music. It costs just **£7** for an hour on a pay as you attend basis.

See the Village Calendar on the back page for more details.

Margaret English

Netball and Tennis

Netball for all takes place from 6pm to 7pm on Mondays. Phone **Debbie on 07880 606702** for more information.

On Tuesdays, it's tennis starting at around 5.00pm and we have a WhatsApp group to confirm if we have enough people to play. We are all relatively keen, all levels of fitness, and like to think we are more able than we probably are. If you are interested in joining us or have any questions, please email anniebsmith@hotmail.co.uk

Girls' Rugby

Welcome to the Girls Rugby section at Tetbury RFC.

We are very proud to say we have over 70 girls from Years 6 to 11 playing rugby at Tetbury RFC, including around a dozen from Crudwell.

Our girls only rugby coaches train our four teams (U11, U12, U14 and U16) on Wednesday evenings and Sunday mornings at the Tetbury Recreation Ground. The teams play regular matches against other clubs in the Gloucestershire local league and also enjoy training sessions with professional women's coaches from Hartpury and Oxford University.

But girls' rugby is about so much more than just the sport. It's about making new friends, developing yourself as a person and breathing the core values that rugby holds – respect, teamwork, enjoyment, discipline and sportsmanship. And having a lot of fun along the way!

If you are interested in finding out more, contact Leon Horton (coach) leonhorton82@gmail.com or Claire Williams (club secretary) clubsecretary.tetburyrfc@gmail.com

Looking forward to welcoming new faces at Tetbury RFC. *Leon Horton*

PS Did I say, the Women's Rugby World Cup is being held in England this August and September?

Crudwell Multi-Sports Facility

- The courts were built to **play tennis, netball, basketball and 5/side football.**
- There is **no charge** for the use of the courts.
- **Maintenance costs are funded entirely by donations, which can be made at The Wheatsheaf, Crudwell Post Office or online by bank transfer. A suggested donation could be £10/hour per court.**
- If you play regularly, please consider joining our **subscription scheme** for a donation of **just £5/month.**
- Help keep the courts in good condition especially **NO WHEELS ON THE COURTS!** Thank you.

Crudwell Recreation Action Group (CRAG) part of the Crudwell Village Hall & Recreation Ground charity no.294177
Email bookings@cvhrg.org.uk
for more information.

WE ARE RELOCATING to a bigger and better premises.

The same team, in a bigger premises, with more services to offer!

Where have we moved to?

You can find us at Unit 4, Whitewalls Industrial Estate, Easton Grey, Malmesbury, SN16 ORD. Contact us as before on **01666 577 242** and service@crudwellgarageltd.co.uk

Can't get to us? - Free collection and delivery available

We hope to welcome you to our new facility soon and thank you for your continued support.



Colour Analysis & Style Sessions

Discover your seasonal palette and unlock your personal style.
When you know you look good, you feel good and there is nothing better than having the confidence to truly be yourself!

Gift Vouchers available

Colour Consultations, Style Appointments
Wardrobe Edits & Personal Shopping

 HOUSE of COLOUR

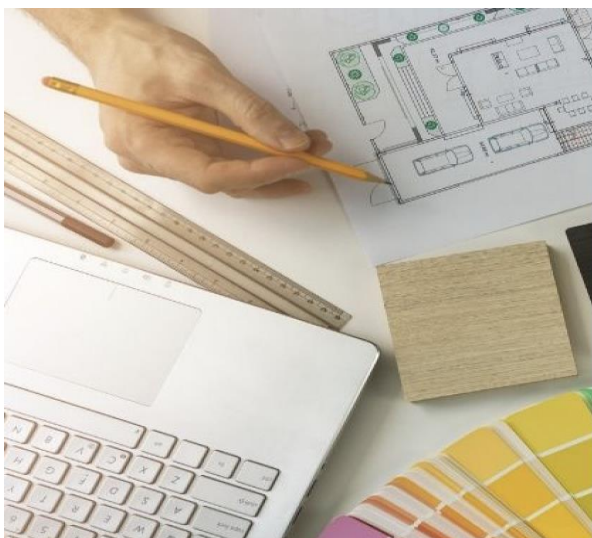
07790 704502
jackie.mitchell@houseofcolour.co.uk



T.M Installations
Plumbing and Heating Engineer

Reliable and Local – No job too small
From leaky taps to full bathroom renovation
Tiling service also available

Tom Murphy
Tel: 01666 577170 07766614606




BARRADALE DESIGN

Interior Design and Property
Development in the Cotswolds

- Single Room Interior Design
- Outbuilding Conversion
- Whole House Renovation
- E-Design Service
- CAD Drawings

www.barradaledesign.com



Talking Wines

Independent Wine Shop
Hundreds of wines available

3 Emmervale Court, Midland Road
Cirencester GL7 1PZ
Tel: 01285 650250

www.andrea@talkinwines.co.uk

JAGGED EDGE DESIGN LTD

ARCHITECTURAL DESIGN SPECIALISTS

We specialise in bringing considered design to new build domestic houses, extensions and refurbishments.

We offer a comprehensive, professional service covering - Design, Planning, Building Regulations, and if you wish Project Management.

Call Gary or Andrea Lawes on - 01285 841317
or email info@jaggededgedesign.co.uk
www.jaggededgedesign.co.uk

FRENCH / GERMAN LESSONS

Tuition given in either French or German, any level, beginners to A-level, by experienced language teacher.

- **Oral practice in preparation for exams**
- **Adult conversation classes**
- **Help with grammar**
- **Individual lesson or small group lessons**



For more information call **Elizabeth** on **01666 577565**
email Liz.Churchill@outlook.com



STABLES TO LET EASTCOURT, MALMESBURY

EXCELLENT FACILITIES INCLUDE:

- Stables within a large barn
- Quiet Location
- All Year Turn Out
- Tack Room & WC
- Outdoor School 30m x 50m with Lights
- All Weather Lunging Ring
- Horsewalker
- Wash Down Area
- Lorry Parking



CONTACT: Sara Palmer on 01666 577699 / 07974021006

TETBURY GOODS SHED

A R T S C E N T R E

GOODS SHED HIGHLIGHTS FOR MARCH



- March 1** **Comedy Club:** Spring-Time Comedy Goodness features stand-up comedian James Cook, Bristolian Dani Johns and Jack Campbell for an evening of mirth and merriment. Tickets in advance £13.50. 8pm
- March 8** **The Importance of Being Earnest:** The first of our partnerships with the National Theatre brings a specially filmed production of Oscar Wilde's classic play. Tickets in advance £15. 7.30
- March 16** **Charlie Hooper-Williams:** The pianist weaves together music and visuals with the help of Otto, his computer co-performer, to produce stunning visual which mirror the music. Tickets in advance £13. 6pm
- March 26** **Playtime Theatre:** The Last Baguette Company brings your 2–6-year-olds cheesy tunes from Ratty's band to sing along to in a fun theatre session. Tickets in advance parents £5, children £5 (babies free). 10am
- March 29** **Coco Tomita & Simon Callaghan:** Celebrated Japanese violinist Coco joins with pianist Simon in an evening of Debussy, Prokofiev and Beethoven. Tickets in advance £24. 7.30

Check our website for further details of films, Wednesday afternoon concerts and talks and to book tickets

www.tetburygoodshed.co.uk

What's on in Crudwell?

March Village Calendar

All Saints Crudwell	Friends and Family Service	All Saints Church	Sunday 2 March 10.00
	Holy Communion	All Saints Church	Sunday 23 March 11.00
Arty Moose <i>Art club for 5-11s</i>	Gillian 07843271517	Crudwell Village Hall	Wednesdays (term time only) 16.00 – 17.30
Coffee 'n' Chat	Rosemary Williams 01666 575073	All Saints Church	12 March 10.30 – 12 noon
Crudwell Badminton Club	hilarywarner62@gmail.com.	Crudwell Village Hall	Mondays 19.30 – 22.00
Crudwell Ladies	Judy Paginton 577370 Margaret English 577572	Crudwell Village Hall	12 March 7.00 for 7.15
		The Wheatsheaf	26 March 10.30
Crudwell Parish Council Meeting	Roy F Hamilton-Lambley roy.lambley@gmail.com	Crudwell Village Hall	<u>18 March</u> 19.00
Crudwell Pre- School	Cathy 07986622191 info@crudwellpreschool.co.uk	Crudwell Village Hall	Mon/Weds/Fri 9.00 – 15.00
Crudwell Scouts And Explorer Scouts	crudwellscouts@gmail.com	Crudwell Village Hall	Thursdays 19.00 – 21.00 Scouts 19.00 – 21.30 Explorers
Crudwell Short Mat Bowls	Anita 07977566883 or Geoff 07400266866.	Crudwell Village Hall	Tuesdays 19.00 - 21.30 Thursday 14.00 – 16.30
Netball for All	Debbie Gregory 07880 606702	Multi- sports facility	Mondays 18.00 - 19.00
The Arts Society Malmesbury <i>Lecture series</i>	info@theartssocietymalmesbury.org.uk	Crudwell Village Hall	11 March 13.45-16.00
North Wilts Flower Club	Cathy Carroll 07703299277 carrollcath@aol.com	Crudwell Village Hall	19 March 19.00 – 22.00
Pilates	Kate Veakins 07957 313109 Katie@abelpilates.co.uk	Crudwell Village Hall	Tuesdays 9.30 -10.30
Rugbytots <i>Sport for 18 mths – 6 year olds</i>	Email Kimberley Robson northwestwilts@rugbytots.co.uk	Crudwell Village Hall	Saturdays 8.30 onwards various sessions
Tai Chi	Carmel Straughan 577502 Margaret English 577572.	Crudwell Village Hall	Tuesdays 11.30 - 12.30